

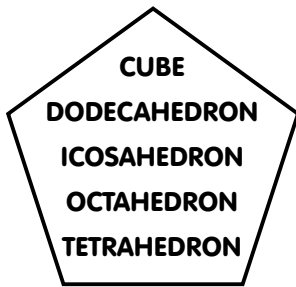
**PRINT THIS ON HEAVY PAPER OR CARD STOCK  
CUT AND PASTE - COLLECT THE WHOLE SET**

BE THE ENVY OF YOUR NEIGHBORHOOD  
BE THE TALK OF YOUR BLOCK

# THE CUBE

A platonic solid is a polyhedron whose faces are all congruent regular polygons, and the same number of faces meet at every vertex.

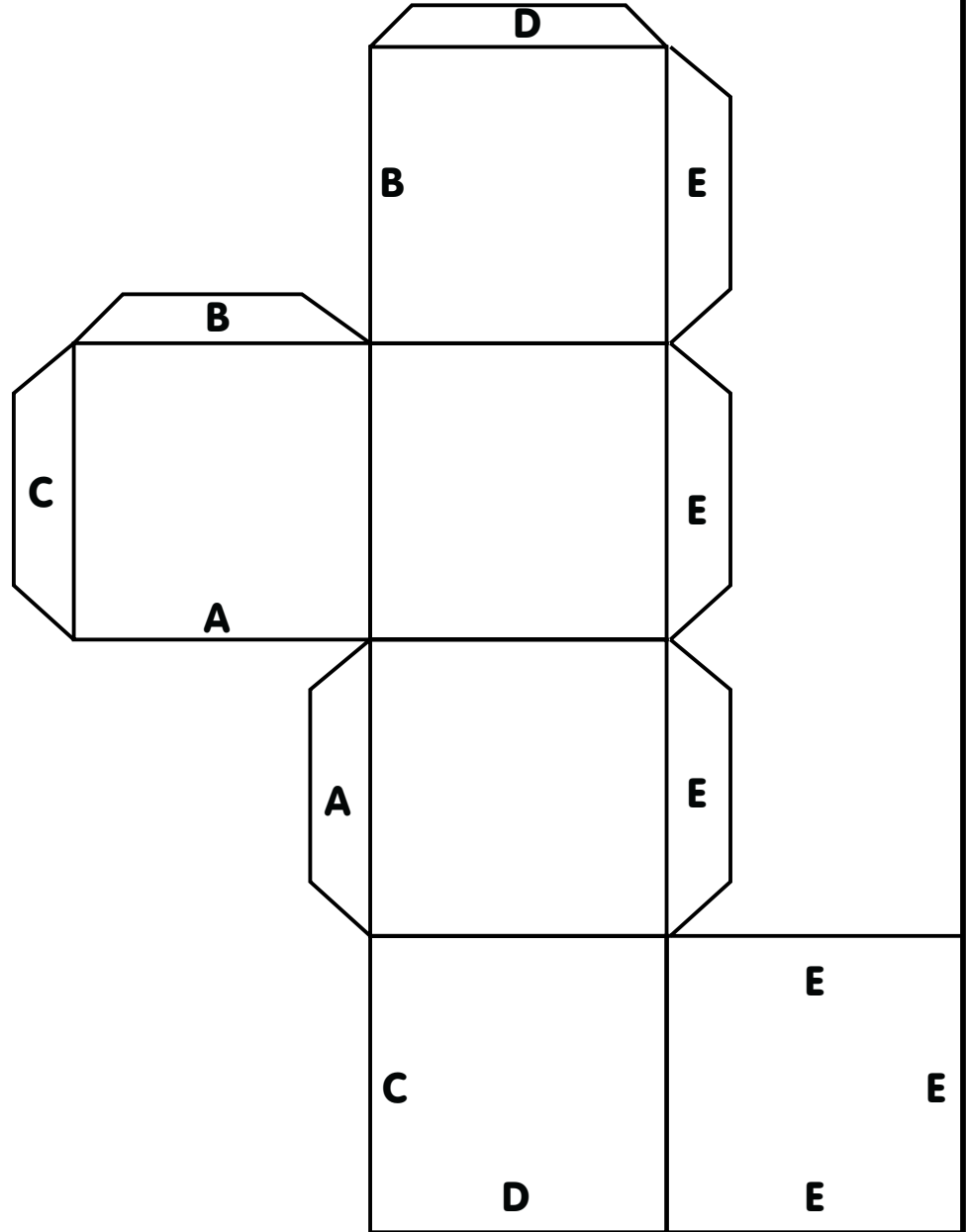
The Greeks observed that there are only five platonic solids:



as was proved by Euclid in the last proposition of the Elements.

They were described by Plato in his Timaeus  
Plato equated

- TETRAHEDRON WITH FIRE
- CUBE WITH EARTH
- ICOSAHEDRON WITH WATER
- OCTAHEDRON WITH AIR
- DODEHEDRON WITH THE STUFF OF CONSTELLATIONS AND THE HEAVENS



Cut around the edge and glue the letters inside the model.



OPINIONS AND FEELINGS ARE FREQUENTLY A PERSONAL TRIUMPH OVER GOOD THINKING  
YOU DEFINE REALITY BY WHAT YOU KNOW, WHAT YOU BELIEVE, AND WHAT YOU DO ABOUT IT.